



## ME4937RM-FLA RECYCLING LID

WITH RUBBER FLAP. FOR 4 WHEELED 1100 LTR. CONTAINERS.

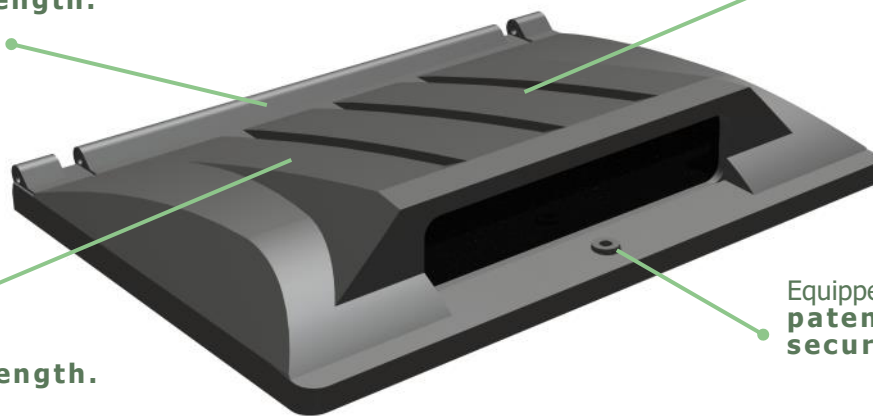
*LIGHTWEIGHT - ROBUST - USER FRIENDLY - COST EFFICIENT*

3 large hinge lugs  
for optimal strength.

Sloped form to assist  
water draining.

High dome and deep  
ribbing provide  
exceptional strength.

Equipped to accept  
patented CCE lock for  
security.



With rubber flap for collection of paper.

To fit Taylor Continental Mk2, Sellers Eurobin, Spider UK & Otto 1100 ltr. metal containers.

### OPTIONS

> Also available with brushes for bottles / cans (ME4937RM-BSA).

### AVAILABLE ACCESSORIES

> hinge bar, brackets & locks.

### MATERIAL

> Rotationally moulded from UV - stabilized LMDPE; double-walled; oil, chemical and frost resistant; 100% recyclable.

### COLOURS

> Available in black and a wide variety of colours.



## TECHNICAL DIMENSIONS

